

QMass[®] MR

Evaluating Cardiac MR the Way That Matches Your Workflow

In today's busy practice, it is essential to make efficient use of time available for interpreting cardiac MR data.

QMass MR complements various levels of quantitative analysis with support for qualitative analysis, matching various workflows and working environments. It enables physicians to visually score cardiac MRI or to quickly obtain key results, such as LV diameters, ejection fraction, and stroke volume. For those cases where in-depth information is needed, QMass MR helps quantify regional function and viability. Researchers will find they can obtain highly detailed results on specific regions of interest.

For every approach, QMass MR provides the level of reporting required—fully supporting everyday post-processing workflow and making it more efficient.

QMass[®] MR Benefits

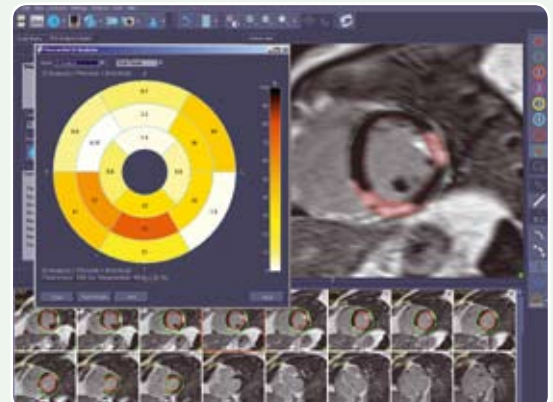
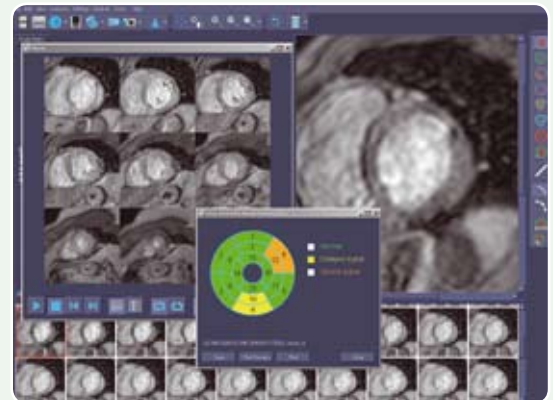
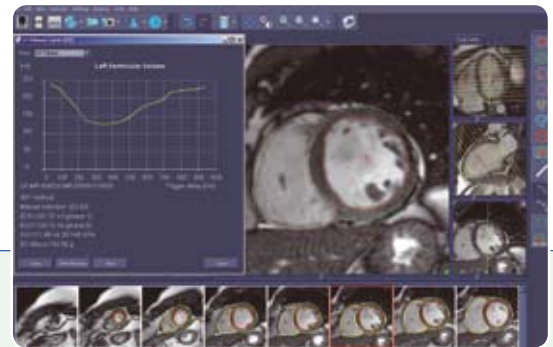
- Optimizes post-processing workflow
- Decreases inter-observer and intra-observer variability
- Reduces learning curve with guided workflows
- Combines qualitative and quantitative findings

QMass[®] MR Features

- Automatic LV and RV contour detection
- Guided workflows for performing analyses
- Analysis of LV and RV function
- Analysis of delayed signal intensity studies
- Analysis of time-intensity studies
- Analysis of functional stress level studies
- Synchronized visualization of stress levels
- Visual scoring of wall motion, time-intensity and viability
- Predefined comments for fast reporting
- Import of QFlow[®] analysis results in QMass MR reports
- Export of analysis results in various formats, including TXT, PDF, HTML, XML and DICOM
- DICOM connectivity
- Vendor-independent



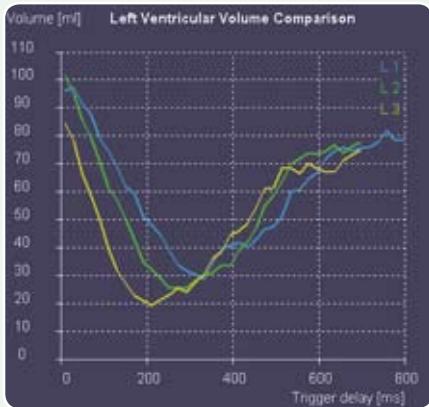
innovative
RV automatic
contour
detection



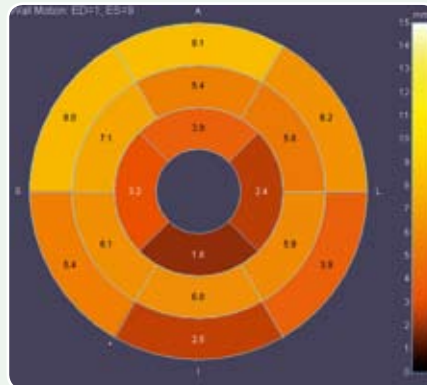
Quality
in
Quantification

Every Fact That Matters to You...

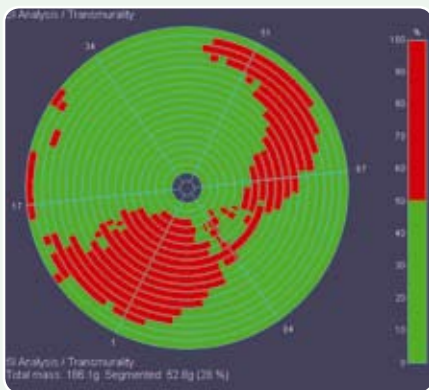
Is the ventricular function normal?



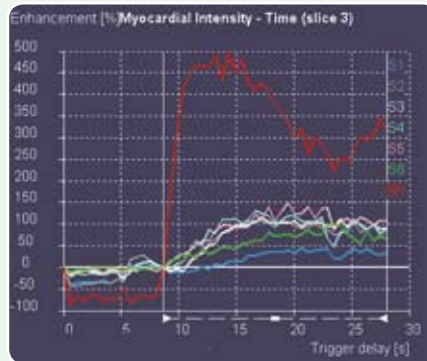
Are there any wall motion abnormalities?



How much scar tissue is there?



How is the blood supply to the myocardium?



...in a Clear and Concise Report



QMass is a registered trademark of Medis medical imaging systems bv in the United States and in other countries. QFlow is a registered trademark of Medis medical imaging systems bv in the Benelux. QMass® MR is based on image processing algorithms developed at the Division of Image Processing, Department of Radiology, Leiden University Medical Center.

Medis medical imaging systems bv
 Schuttersveld 9 2316 XG Leiden
 P.O. Box 384 2300 AJ Leiden the Netherlands
 Tel. +31 (0)71 522 32 44 - Fax +31 (0)71 521 56 17
 www.medis.nl - sales@medis.nl

Medis medical imaging systems, Inc.
 9360 Falls of Neuse Road, Suite 103
 Raleigh, NC 27615-2484 USA
 Tel. (919) 278 7888 - Toll free: (866) 566-7200
 Fax (919) 847 8817 - us-sales@medis.nl

