

QPlaque[®] MR



Analyzing Vessel Wall and Visualizing Plaque in Multi-Spectral MR

When assessing atherosclerosis, vessel wall remodeling and plaque composition are important factors: they can help indicate whether the patient's state is stable or unstable. Quantifying the vessel wall and marking the various plaque components help give insight into the overall condition.

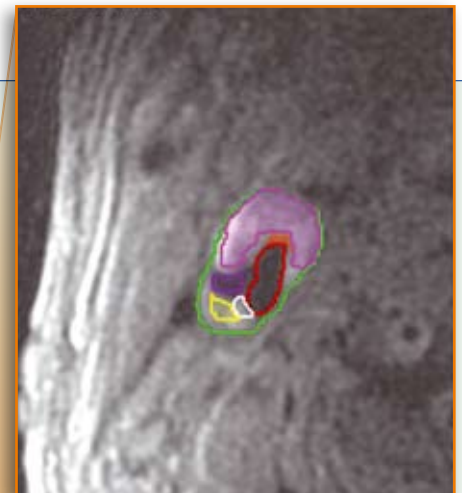
QPlaque MR analyzes the vessel wall in multi-spectral MR studies of carotid arteries. It offers automatic contour detection, making it possible to quickly and accurately measure thickness, area and volume of the diseased vessel wall. It also enables medical specialists to quickly mark and label plaque components in the carotids, using smart editing tools.

QPlaque MR Benefits

- Provides accurate, reproducible and validated results
- Increases workflow efficiency
- Reduces time spent on image post-processing

QPlaque MR Features

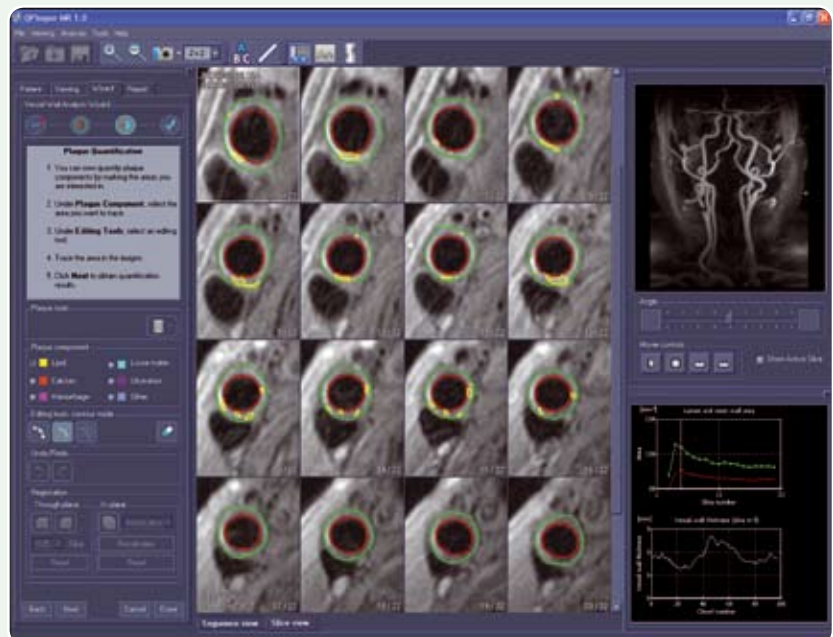
- Guided workflow for performing vessel wall analysis
- Automatic registration of all MR sequences
- Automatic vessel wall contour detection
- Smart editing tools for marking and labeling plaque
- Calculation of vessel wall thickness, lumen and vessel wall areas and volumes, and plaque index
- Calculation of size and volume of marked areas
- Storage of analysis results in DICOM format
- Export of analysis reports as PDF



Combination of MRA and Vessel Wall MR Ensures Accuracy



Graphical Representation of Results



QPlaque is a registered trademark of Medis medical imaging systems in the United States and in other countries.

QPlaque® MR is based on image processing algorithms developed at the Division of Image Processing, Department of Radiology, Leiden University Medical Center.

Medis medical imaging systems bv
Schuttersveld 9 2316 XG Leiden
P.O. Box 384 2300 AJ Leiden the Netherlands
Tel. +31 (0)71 522 32 44 – Fax +31 (0)71 521 56 17
www.medis.nl – sales@medis.nl

Medis medical imaging systems, Inc.
751 Miller Drive, Suite E-1
Leesburg, VA 20175-8993 USA
Tel. (703) 737-3795 – Toll free: (866) 566 7200
Fax (703) 737-3793 – us-sales@medis.nl

Quality
in
Quantification